

## Free-Energy-Patents

Patents for free energy systems where the outputted surplus energy is not balanced by the same amount of energy feeded into the input of the system are usually named «PM» = perpetuum mobile.

This is usually done when the inventor and/or the patent lawyer resp. the officials at the patent authority have no idea where the additional energy is feeded in.

Sometimes it can be speculated that the additional «free generated energy amount» is produced by an internal process which is not identified (e.g. nuclear or chemical) or by a certain energy transfer from the environment (e.g. via heat or magnetic fields).

In any case it is evident that according to the physical laws each mass or energy transfer resp. conversion have to be balanced. A PM-system without internal mass/energy conversion or without external mass/energy/field transfer/conversion is not possible. Therefore PM is a misnamer and cannot exist.

**The terms used by the inventors or applicants for such patents are often called :**

- A renewable energy self generating system
- Circular self-powered magnetic generator
- Closed energy combined cycle system
- Cyclic power generating device
- Electrical surplus power generator
- Electric current recycling
- Electricity generated of recurring energy
- Electronic perpetual engine
- Fuel free and self powered generator
- Limitless energy
- Magnetic force based automatic power generation device
- Perpetual motion energy
- Perpetual power generator
- Power Multiplier
- Regenerative energy generation system
- Selbstgenerierende Energiequelle
- Self-charging generator
- Self generating electrical system
- Self-powered alternative energy machine to generate electricity
- Self powered electrical system
- Self-powered magnetic generator
- Self-recharging electric generator system

**Classifications describing such systems are :**

**H02K53/00**

Alleged dynamo-electric perpetua mobilia

**H02N11/00**

**Generators or motors not provided for elsewhere; Alleged perpetua mobilia obtained by electric or magnetic means** (by hydrostatic pressure **F03B17/04**; by mechanical means **F03G7/10**; by dynamo-electric means, including arrangements of permanent magnets interacting with other permanent magnets, **H02K53/00**)

## Examples :

**US 6,362,718 B1** (B1 = patent is approved) March 06, 2002 **Inventors:** Stephen L. Patrick, Thomas E. Bearden et.al.

**In the patent description you can find the following paragraphs:**

**on page 10**

... Under start up conditions, the sensing and switching circuit **36** connects the switching and control circuit **24** to an external power source **38**, which is, for example, a starting battery. After the electromagnetic generator **10** is properly started, the sensing and switching circuit **36** senses that the voltage available from regulator **34** has reached a predetermined level, so that the power input to the switching and control circuit **24** is switched from the external power source **38** to the output of regulator **34**. After this switching occurs, the electromagnetic generator **10** continues to operate without an application of external power...

**and on page 10:**

... In the example of FIG. 1, except for a brief application of power from the external power source **38**, to start the process of power generation, the power required to drive the input coils **26, 28** is derived entirely from power developed within the right output coil **29**. If the power generated in a single output coil **29, 30** is more than sufficient to drive the input coils **26, 28**, an additional load **126** may be added to be driven with power generated in the output coil **29** used to generate power to drive the input coils **26, 28**. On the other hand, each of the output coils **29, 30** may be used to drive a portion of the input coil power requirements, for example with one of the output coils **26, 28** providing the voltage V for the FET **60** (shown in FIG. 2), while the other output coil provides this voltage for the FET **62**.

In the claims you can find the same assertion :

- 5.** The electromagnetic generator of claim 4, wherein said **switching circuit is driven** by an external power source during a starting process and **by power induced in said first output coil during operation after said starting process**.

This is repeated in the claims 16, 19 and 21.

**Such a description means that the MEG produces continuously energy** even when the external energy source – which is evidently only needed to start the system – is switched off.

**This is clearly a certain kind of Perpetuum Mobile** according to the standard physics and should not be accepted as patentable – at least in Europe. It should be classified therefore also as h02k53/00 but the application has only the international classification h01F27/24 which represents « magnetic cores ».

In America it is possible to get a patent approval even for such PM circuits – given that you can demonstrate a hardware circuit which operates exactly as it is written in the patent text. This was evidently the case for this patent.

**To avoid a PM classification in Europe it is needed that the inventor(s) explained in detail where the additional energy is coming from and by which process the energy is coupled in.**

In the case of the MEG it should be explained how energy can be released or how energy fluctuations from the quanta fields resp. from the vacuum field can be rectified and be transported via internal magnetic fields to the system.

Because you cannot find general accepted theories about such a kind of energy harvesting from the environment it would be a must to present at least one or more physical theories which could perhaps explain such strange behaviour of an electromagnetic circuit.

**Some of such theories are listed here:**

Theory of Einstein-Cartan-Evans-Theory (ECE theory), see:

<http://aias.us/documents/uft/paper100.pdf>

Unitary Quantum Theory of Prof- Lev Sapogin, see:

[www.borderlands.de/Links/Sapogin-NewEnergy-Issue1-18.pdf](http://www.borderlands.de/Links/Sapogin-NewEnergy-Issue1-18.pdf)

**GR1009268 (B)** Patent granted 2018-03-30, **Inventor** : CHRISTOS NIKOLAOU PALAIOLOGOU

### Power Multiplier

#### Abstract:

The invented power multiplier is composed of a power condenser 1 feeding the electric motor 3 and boosting with its power the power generated by the magnetic rotor 6. The whole produced mechanical power is rendered to the electric generator 7 and channeled for the feed-back of the system as well as for consumption. The **advantages** of the invention are: **power autonomy of the system** which is entirely ecological and able to operate in every environment and site.

Evidently it is clearly written here that the system can operate autonomously because some power is feeded back into the system and at the same time multiplied (by some unknwn process). **The system is correctly classified also as k02k53/00 – but incorrectly – it was granted for patent.**

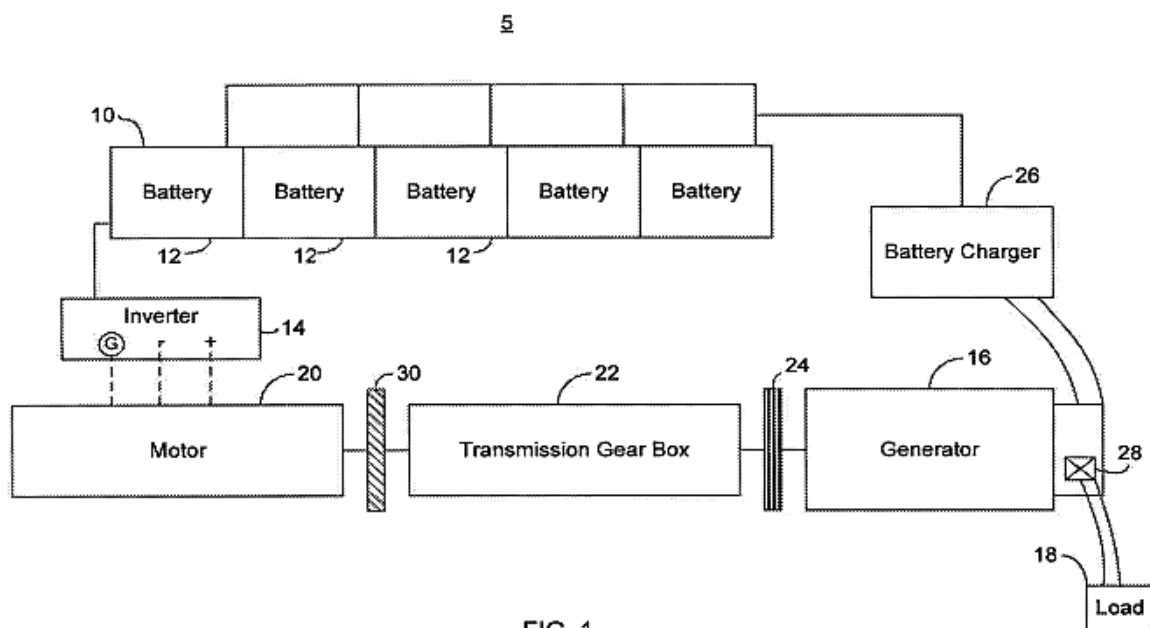
**It is assumed that the inventor was able to demonstrate that his system works really** and therefore got a patent (B). This was done even by knowing that – according to present physical laws – it is not understood where the additional (multiplied part) of the energy is coming in.

**US9276453 (B2)** Patent granted 2016-03-01 **Inventor**: Galvan Mario A (US)

### Electrical System and Method for Sustaining an External Load

#### Abstract:

An electrical power system is disclosed including a first magnetic power generator and a second magnetic power generator wherein the first magnetic power generator is positioned within the second magnetic power generator. Also disclosed is an electrical power system including a first core having a second magnet rotor and a second stator with the first core positioned within the second core. The first magnet rotor is capable of operating in either an opposite rotational direction or same rotational direction as the second magnet rotor.



As it can be seen in the Fig. 1 there is only an energy output which goes to the load and to the battery charger input but **no energy input**. It has to be assumed that the charger will continuously load the battery so that the system can work like a PM. **Therefore the invention is correctly classified as PM (h02k53/00).**

It can be assumed that the inventor has presented a working device in order that it was possible to grant the patent (B2).

**US2012286572 (A1)** (patent not approved till Aug/2018) 2012-11-15 **Inventor:** Tracy Steven B. (US)

### SELF-SUFFICIENT GENERATOR FOR PRODUCING ELECTRICAL POWER

A self-sufficient generator system includes one or more battery banks recharged by alternators driven by a motor. A main battery bank provides power to a load while other battery banks power the motor.

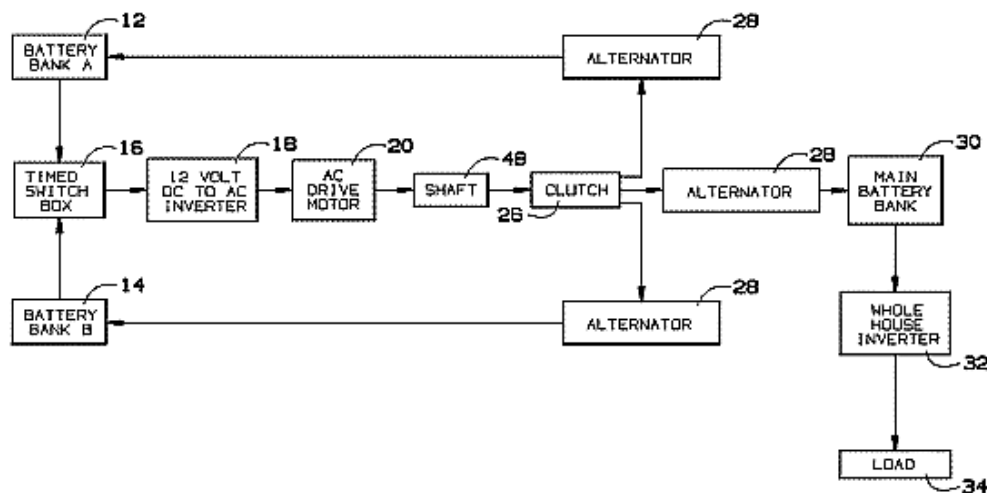


FIG. 1

As it can be seen in Fig.1 the closed system produces energy to a load and at the same time to alternators which load batteries alternatively. Therefore no external energy input is needed.

In the description you can read:

[0004] Thus, in view of the limitations recognized with other power sources, individuals would benefit from having an ability to provide sustainable power to a load while minimizing an amount of external power needed to sustain the load.

Evidently the inventor offers with his system a possibility to produce sustainable power to a load and to minimize at the same time the amount needed from an external energy source to be fed in. **In the diagram you do not see any connection to an external source** so it seems that **the system works like a PM**. Consequentially the patent application is also classified in the class h02k53/00.

**GB121561** (Complete accepted Dec. 24, 1918) **Inventor:** Carlos Benitez

## **New Process for the generation of Electrical Energy**

### **COMPLETE SPECIFICATION.**

#### **New Process for the Generation of Electrical Energy.**

I, **CARLOS BENITEZ**, Civil Engineer, of 141, Ocampo Street, in Guadalajara, Mexico, do hereby declare the nature of this invention and in what manner the same is to be performed, to be particularly described and ascertained in and by the following statement:—

This invention relates to a new utilisation of the high frequency currents or electrical oscillations, by means of which a constant production of electrical energy can be secured, under unusually simple, economic and practical conditions.

...

Summarily the production of electrical energy by such procedure, can not be less inexpensive, since the operation of a plant of this kind does not require a continuous provision of fuel, neither the installation of a water-power plant which is not always obtainable. By such procedure, the installation can be made just in the place in which the electrical energy should be employed, and once the installation is made, the plant can be kept in operation indefinitely at a trifling cost of maintenance.

According to Peter Lindeman, who has replicated the battery loading process of Carlos Benitez with switched currents, it is also quoted in the patent text:

"Obviously the current furnished by the discharge of battery 1-2 alone, would produce a smaller charge in batteries 3-4, if some extra energy were not added to the normal output of said battery 1-2. With this object in view any of the known methods for the generation of high frequency currents, as well as those described in the aforementioned English Patents, can be employed in conjunction with said batteries, in order to **provide that complementary energy**, and in this manner **it is always possible to charge and discharge alternately** each battery from one to the other, **maintaining constant a storage of electricity and producing furthermore an excess of electrical energy.**"

A survey to such pulse charging methods can be read under:

[www.borderlands.de/Links/Free\\_Energy\\_Multiplier.pdf](http://www.borderlands.de/Links/Free_Energy_Multiplier.pdf)

---

**US7095126 (B2)** (patent approved) Aug. 22, 2006 **Inventor:** **Jesse McQueen (US)**

#### **Abstract**

An external power source such as a battery is used to initially supply power to start an alternator and generator. Once the system has started it is not necessary for the battery to supply power to the system. The battery can then be disconnected. The alternator and electric motor work in combination to generate electrical power. The alternator supplies this electrical power to the two inverters. One inverter outputs part of its power to the lamp load device and part back to the electric motor/generator. This power is used to power the electric motor. The second inverter supplies power to the specific load devices that are connected to the system.

### Claims (extract and reduced)

- An inverter system which receives energy produced by an electric motor while said inverter system supplies power back to said electric motor ...

Because the system is also able to supply a part of the produced power to a non-inductive load – third claim – **it is evident that the claims describe a “closed system” which produces the energy – from an unidentified source – itself.**

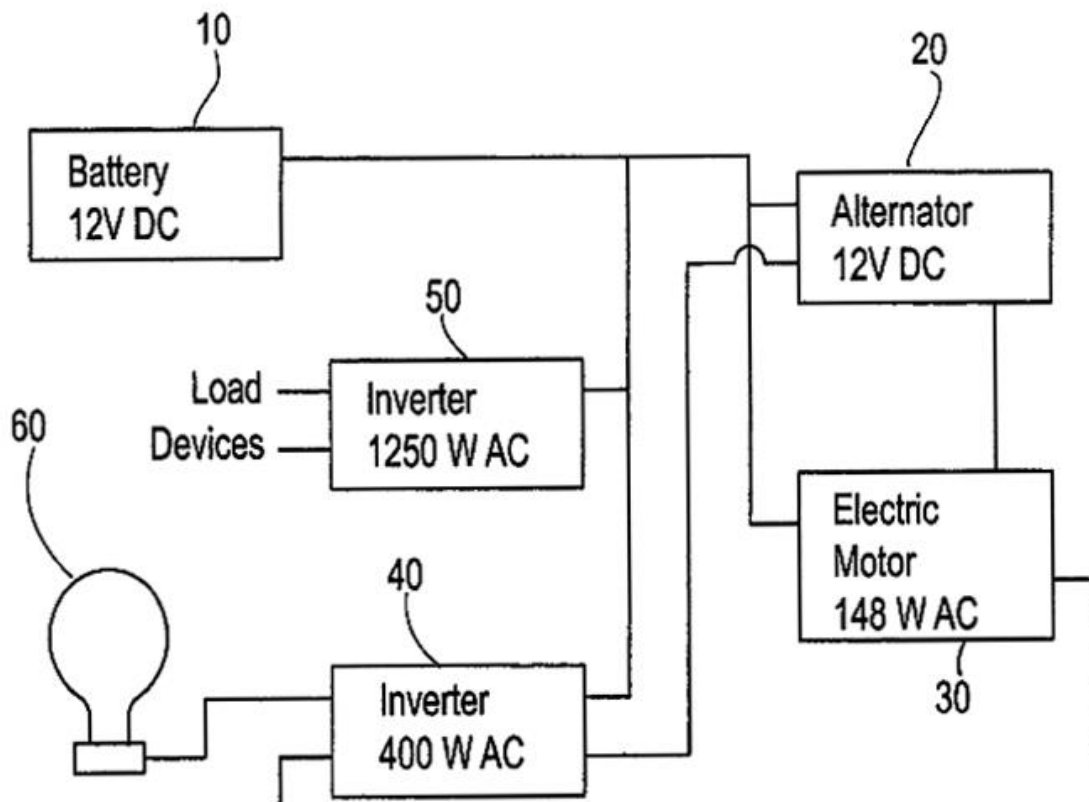
### Conclusion:

It is clearly written that once the system has started it is not further necessary for the battery to supply power to the system **therefore the system is working autonomously** without any (visible) energy coming from an external connected source.

**This is clearly an indication for a PM and the classification H02K53/00 as noted in the application US21006076781 (A1) – 2006-04-13 bibliographic date is correct.**

#### 1. Internal energy generating power source

★ Inventor: MCQUEEN JESSE [US]	Applicant:	CPC: <u>H02K53/00</u>	IPC: F02B63/04 F03G7/08 H02K7/18	Publication info: <b>US 2006076781 (A1)</b> 2006-04-13 <b>US 7095126 (B2)</b> 2006-08-22	Priority date: 2004-06-03
-----------------------------------	------------	--------------------------	---	--	------------------------------



Remarkably and strangely is that **the inventor got the patent** by registering the same patent text **under the new application number US7095126 (B2) – 2006-08-22**. And under this number and even going to the original document US2006076781 (A1) you will not find the classification H02K35/00.

## Magnetic Power converter

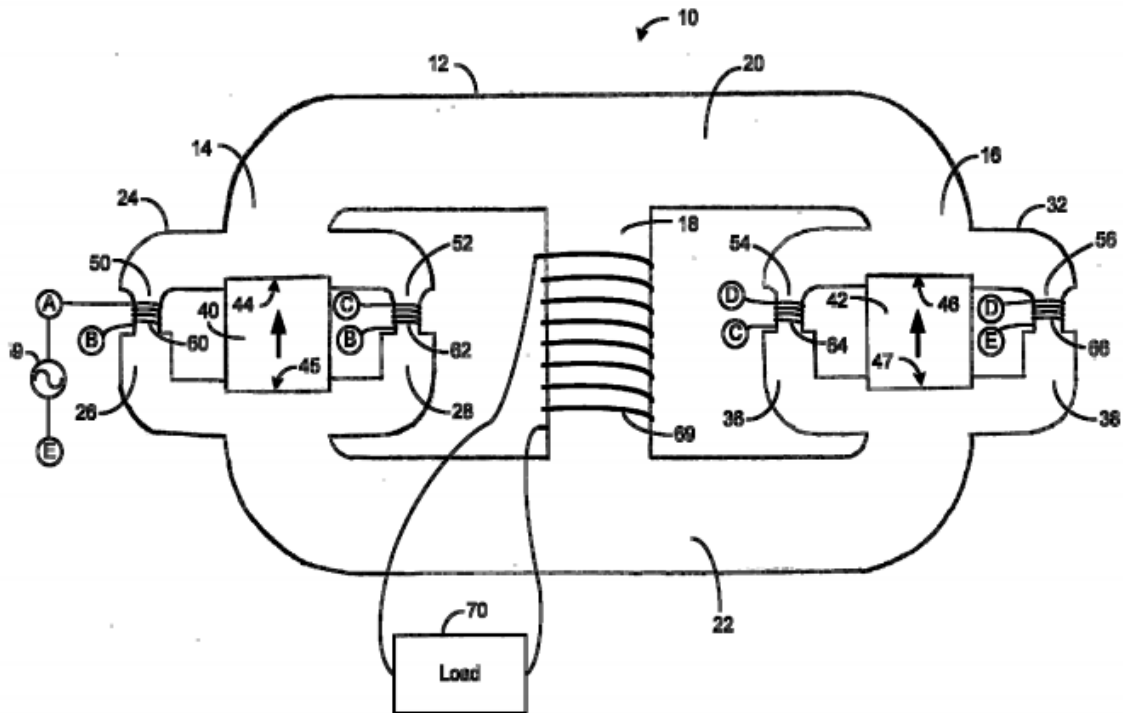
### Abstract (Extract)

...

Due to a mitigation of Lenz effect, **full output loading is not reflected in the input**; this property supports real power conversion efficiencies that may have wide applications in alternative energy and green energy generation.

### Comments:

This is an example of a **non-symmetrical transformer device** meaning that more power on the output is generated which is not reflected by a corresponding higher power input. According to existing physical laws (Maxwell) this seems not to be possible because Lenz law is violated.

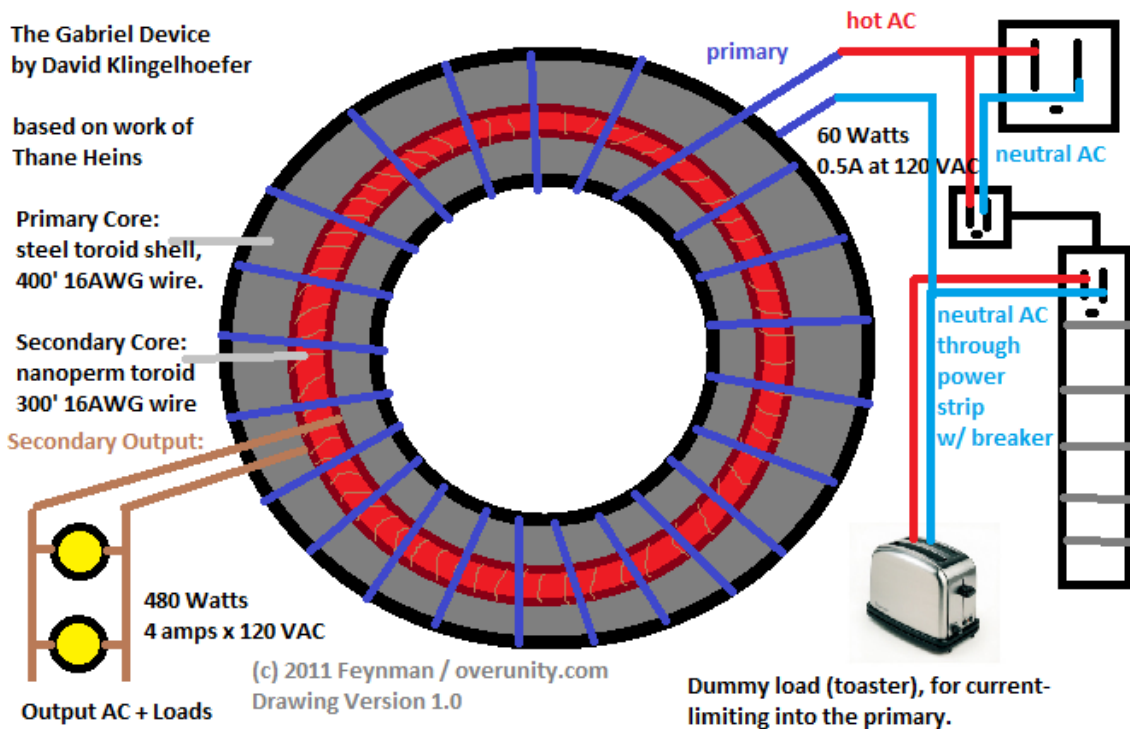


Curiously this patent application was also applied under

**US8736414 (B2)** (patent approved) 2014-05-27 same text, same inventors

but with the (important) difference that in the summary **you cannot find any mention of a mitigation of the Lenz effect** or the fact **that the full output loading is not reflected in the input.**

The Panacea University has published the Gabriel Device which produces Overunity because the Bi-Toroid Device is a kind of non-symmetrical transformer device.



60 W input power is feeded into the toroid device while you get on the output side 480 W.

The multiplication factor is therefore  $480 \text{ W} / 60 \text{ W} = 8:1$

For reference see:

<http://schematiccircuits.blogspot.com/2013/04/two-toroid-over-unity-gabriel-device.html>

**US2012091843 (A1)** patent application not approved 2012-04-19 **Inventor:** Richard G. Gore (US)

### Electricity generated of recurring energy

#### Abstract

The ELECTRICITY GENERATED OFF RECURRING ENERGY (EGORE) unit is a **self-contained system** that produces electricity at continuous voltage loads **without the need of external fuel or additives**. EGORE covertes electricity into mechanical energy, amplifies the mechanical energy, and reconverts mechanical energy into electricity. **The amplification produces a greater amount of electricity than is required to power the unit**; the excess power is stored for external use in a capacitor. EGORE when necessary utilizes a unique inner cooling process that optimizes performance to achieve larger voltage demands. EGORE is modifiable to fulfill small portability needs and achieving all voltage demands. EGORE can be adapted to utilize external cooling and capacitor use with minimal energy losses.

**US2005006902 (A1)** patent application not approved 2005-01-13 Inventor: Matthew R. Patching (US)

#### EPE Electronic perpetual engine

##### Abstract

The EPE is a **machine** that **produces more electricity than it uses for the process**, being entirely self-efficient **creating perpetual energy**. This is accomplished by two methods by using Mechanical Advantage and multiple Dynamos. **The EPE turns Electrical Energy into Mechanical Energy and then back into Electrical Energy**. There are six basic parts to the EPE (see drawing 1). A. Motor B. Battery C. Dynamo D. Large Gear E. Small Gear F. Magnets The EPE can be as big as a house or as small as a baseball. The Mechanical Advantage ratio and the number of Dynamos can vary greatly depending on electrical load demands. This process can create either AC or DC electricity.

**US2005087988 (A1)** patent application not approved 2005-04-28 Inventor: Rodolfo Silvano Mendoza (US)

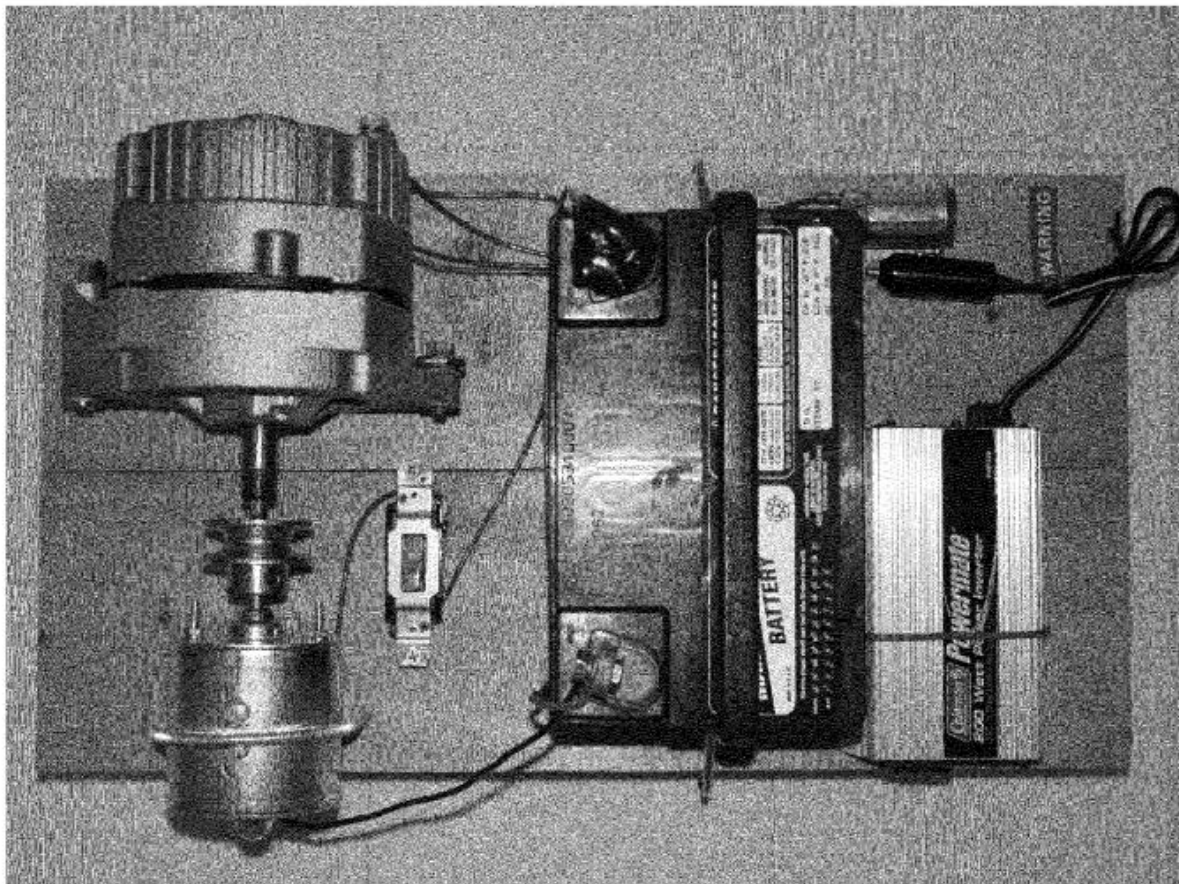
#### Fuel free and self powered generator

##### Abstract

**The use of this invention** in a large scale can effectively eliminate the use of fuel and stop pollution, in this small scale design, appliances and small tools **was able to run successfully**.

Patent Application Publication Apr. 28, 2005 Sheet 1 of 3

US 2005/0087988 A1



**US2011234036 (A1)** patent application not approved 2011-09-29 Inventor: Roberto Torres (US)

### Green Generator

#### Abstract

The present invention, hereinafter referred as the **Green Generator** provides this input with a battery-powered motor, the driveshaft of this motor in turn linked by belt-and-pulleys to an alternator and a generator and, in another embodiment, equipped with a Direct Current to Alternating Current inverter, **to provide household emergency power, and to simultaneously provide Direct Current to continually recharge the battery.**

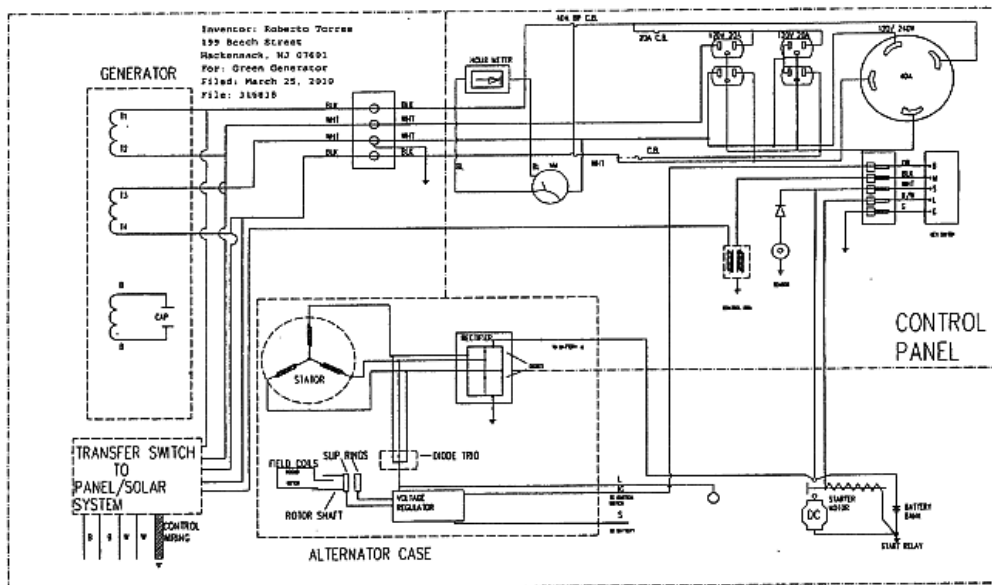


Fig. 2

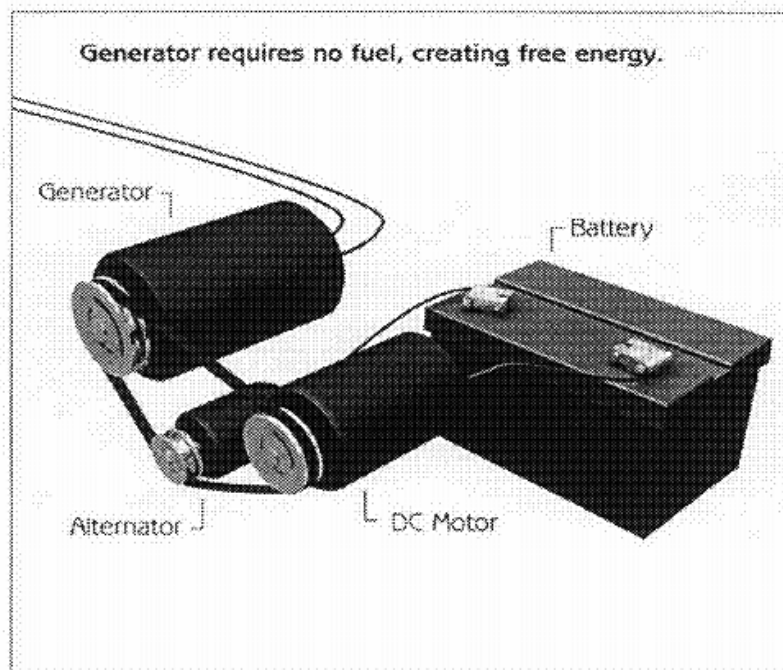


Fig. 1

**US2009250941 (A1)** patent application not approved 2009-10-08 Inventor: Jr Ed Gilbert (US)

**System and method of increasing the output energy of an electrical motor by transferring the output energy through a plurality of hydraulic networks to create a continuous electrical cycle**

**Abstract**

Today, the world is faced with an energy crisis. There are needs for improved ways to conserve energy, increase efficiency of present systems and create a new way of controlling energy. One way to combat this problem is to create a system which utilizes any form of kinetic energy (ex. water current and wind) and transfer its energy through a plurality of hydraulic networks to increase energy efficiency. A more desirable solution is to utilize an electrical motor coupled with a plurality of hydraulic networks and an electrical charging system. **This system can be configured to sustain continuous independent (residential) or commercial power** for various applications as well as all power equipment, cars, etc. This motor/hydraulic/charge coupling not only provides the most cost-effective means of power, but helps save the environment as well.

**TW201815610 (A)** patent application not approved 2018-05-01 Inventors: RICHARD CHI HSUEH [US]; HSU CHUNG-YEH [TW]

**Energy efficient Vehicle**

**Abstract**

An energy efficient vehicle is provided. Wheels are disposed on the front and rear sides of the car body. A gasoline engine in the car body is used to drive an electricity generator to produce electric energy transferred to a capacitive battery, and then to a multi-loop disc-type dynamic motor. The multi-loop disc-type dynamic motor drives the car by rotating the wheels through a transmission and a differential. The multi-loop disc-type dynamic motor can produce large torque and horsepower through multiple stator rings disposed on a stator base and multiple permanent magnetic sheets disposed on the multiple annular ribs of a rotor base. **Therefore, the electricity can be saved to elevate the endurance of the vehicle, and the vehicle does not need to stop for charging.**

**Auch publiziert als**

**US2018/0109169 A1** patent application not approved Apr. 19, 2018

**oder als**

**US2018105029 (A1)** patent application not approved 2018-04-19

**US6545444(B2)** patent approved on April 8, 2003, **Inventor** : John C. Bedini

**Device and method for utilizing a monopole motor to create back EMF to charge batteries**

**Abstract**

A back EMF monopole motor and method using a rotor containing magnets all of the same polarity and in a monopole condition when in momentary apposition with a magnetized pole piece of a stator having the same polarity, said stator comprised of a coil with three windings: a power-coil winding, a trigger-coil winding, and a recovery-coil winding. **The back EMF energy is rectified using a high voltage bridge, which transfers the back EMF energy to a high voltage capacitor for storage in a recovery battery.** The stored energy can then be discharged across the recovery battery through the means of a contact rotor switch for further storage.

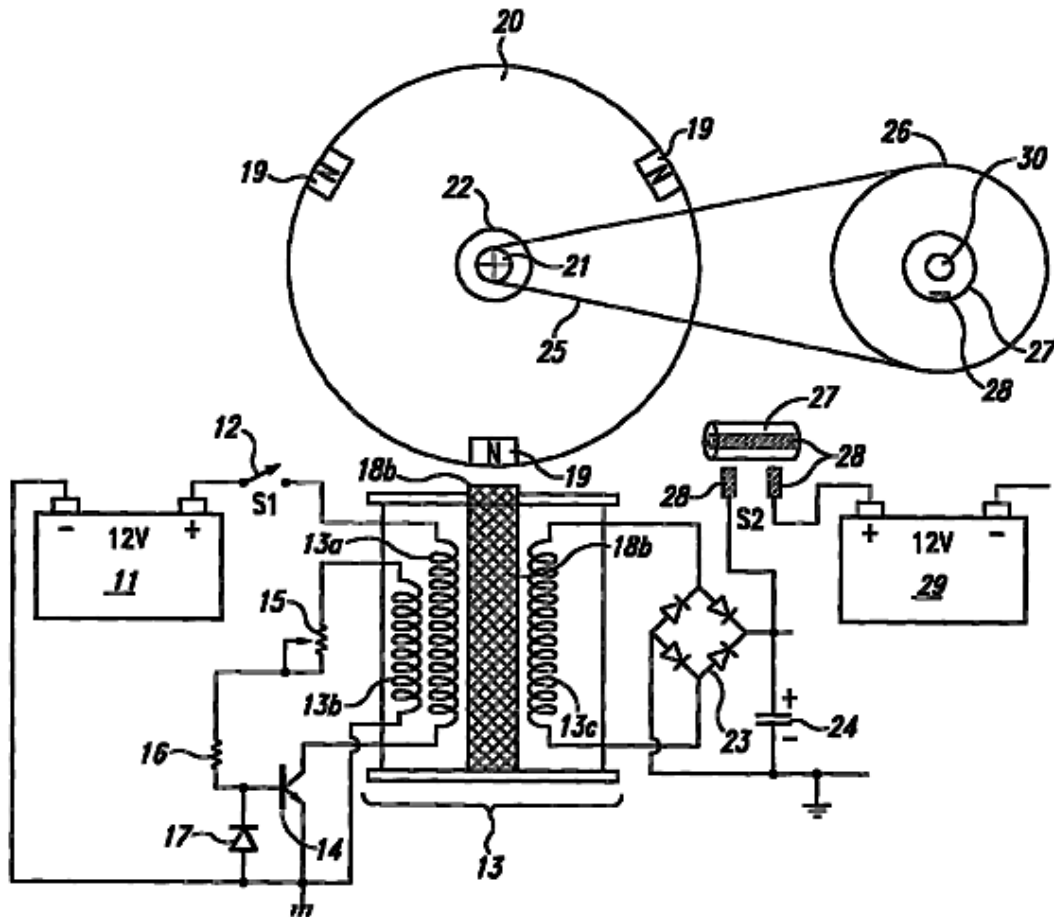
flow component. As a result, the motor captures and directs  
some of this usually wasted available environmental energy, 5  
collecting the available excess energy in the coil and then  
releasing it for use in the motor. By timing and switching,  
the innovative gate design in this new motor directs the  
available excess energy so that it overcomes and reverses the  
return EMF of the rotor-stator pole combination during what 10  
would normally be the back EMF and demonstrates the  
creation of the second back EMF of the system. Now instead  
of an “equal retardation” force being produced in the back  
EMF region, a forward EMF is produced that is additive to  
the rotor/flywheel energy and not subtractive. In short, it 15  
further accelerates the rotor/flywheel.

This results in a non-conservative magnetic field along the  
rotor’s path. The line integral of the field around that path  
(i.e., the net work on the rotor/flywheel to increase its energy  
and angular momentum) is not zero but a significant amount. 20  
Hence, the creation of an asymmetrical back EMF impulse  
magnetic motor: 1) takes its available excess energy from a  
known external source, the huge usually non-intercepted  
portion of the energy flow around the coil; 2) further  
increases the source dipolarity by this back EMF energy; and 25  
3) produces available excess energy flow directly from the  
source dipole’s increased broken symmetry in its fierce  
energy exchange with the local vacuum.

By operating as an open dissipative system not in ther-  
modynamic equilibrium with the active vacuum, the system 30  
can permissibly receive available energy from a known  
environmental source and then output this energy to a load.  
As an open dissipative system not in thermodynamic  
equilibrium, this new and unique monopole motor can tap in  
on back EMF to energize itself, loads and losses 35  
simultaneously, fully complying with known laws of physics  
and thermodynamics.

**It is evident** – although it is not written in the summary – **that the inventor believes** – and had tested  
– **that the batteries can be restored in this way continuously** by using a primary battery A for energi-  
zing the monopol motor and by using a second recovery battery B where the back EMG is stored.  
And after some time the battery are exchanged. It is also evident and can be believed that in such a  
system also some surplus energy can be produced and used.

**The patent was granted** - **although it was also classified as H02K53/00** which corresponds to an  
[alleged dynamo-electric perpetua mobilia](#)



The patent which was granted was also published as an not approved patent application

**US2002130633 (A1)** on Sept. 19, 2002, by the same inventor.