

Carlos Ucròs Developments

updated Febr. 9, 2018/AS

This inventor from Columbia developed several rotoverter systems up to 200 kW and also solid state systems on the basis of Free Energy Mupliplier based on Tesla's Technology.

Here we present his **Free Energy Multiplier UCROS** which **consumes 10%** (e.g. from the grid) **and gives 90%** via DC-AC-inverter to loads up to 5 kW.

This system can also be operated in a closed circle. If the needed 10% input (for the battery charger) is connected to the output of the DC-AC-Inverter, the maximum available power will be reduced.

<http://www.downyoutubemp4.com/channel/UCekI5byUYRYTVboQM5aTbOQ>

Free Energy Multiplier UCROS consumes 10% gives 90% in cuts of energy has autonomy of 12 hours Carlos Ucròs Pedrahita

**Multiplicador de energia libre UCROS consume un 10% da 90% en cortes de energia tiene autonomia de 12 horas ucros@live.com
SKYPE kits-ucros1 POTENTE DE 5 KW EN 220 VAC.DE LARGA AUTONOMIA...**

Question of A. Schneider : What means : ... autonomy of 12 hours ???

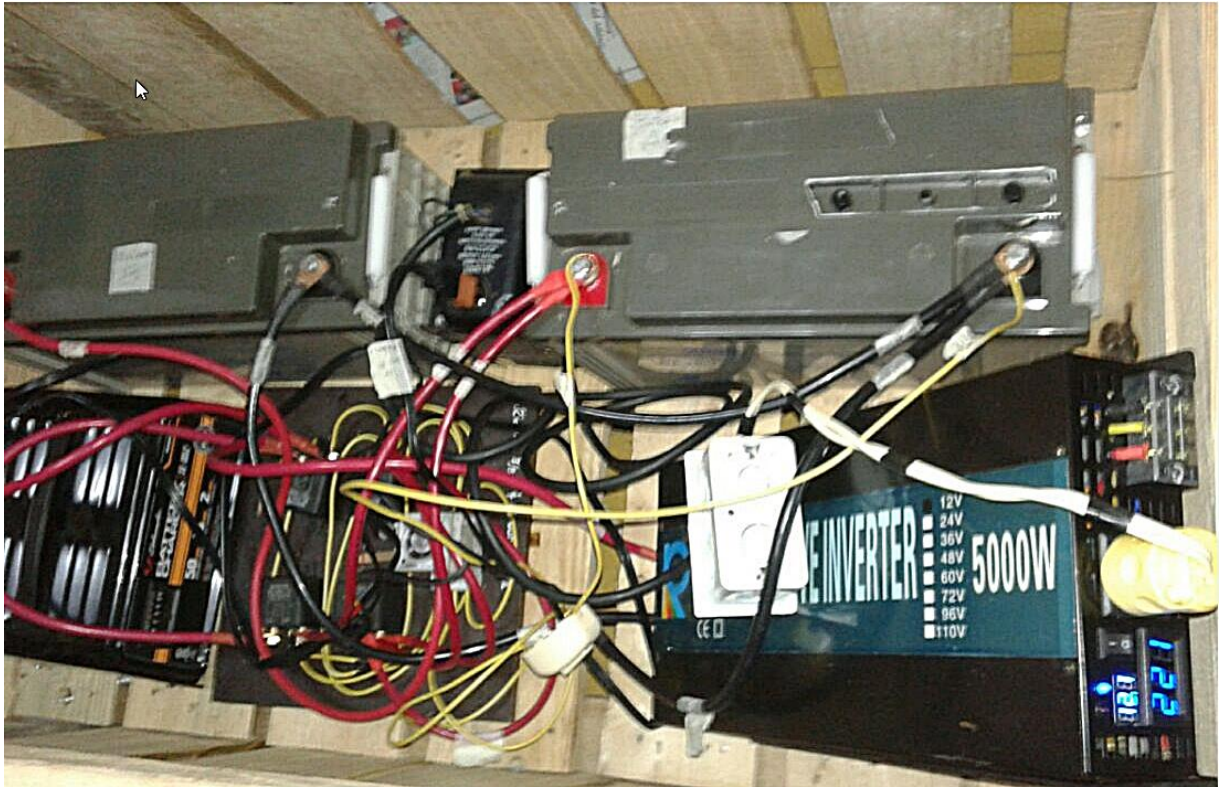
	FREE ENERGY UCROS	Energía libre Ucròs
	If you have faith in me, I'll have it on you.	Si usted tiene fe en mí, yo la tengo en Usted.
	Innovative new way to transform the ENERGY with my Ucrós system Electrical Cycle. Carlos Ucrós Piedrahita	Nueva manera innovadora de transformar la ENERGÍA con mi Sistema Ucros ciclo eléctrico Carlos Ucros Piedrahita
	www.balancin-ucros.es.tl/	www.balancin-ucros.es.tl/

https://www.youtube.com/watch?v=xMp3_Vn-crM&t=2s



<http://www.free-energy-ucros.hol.es/>



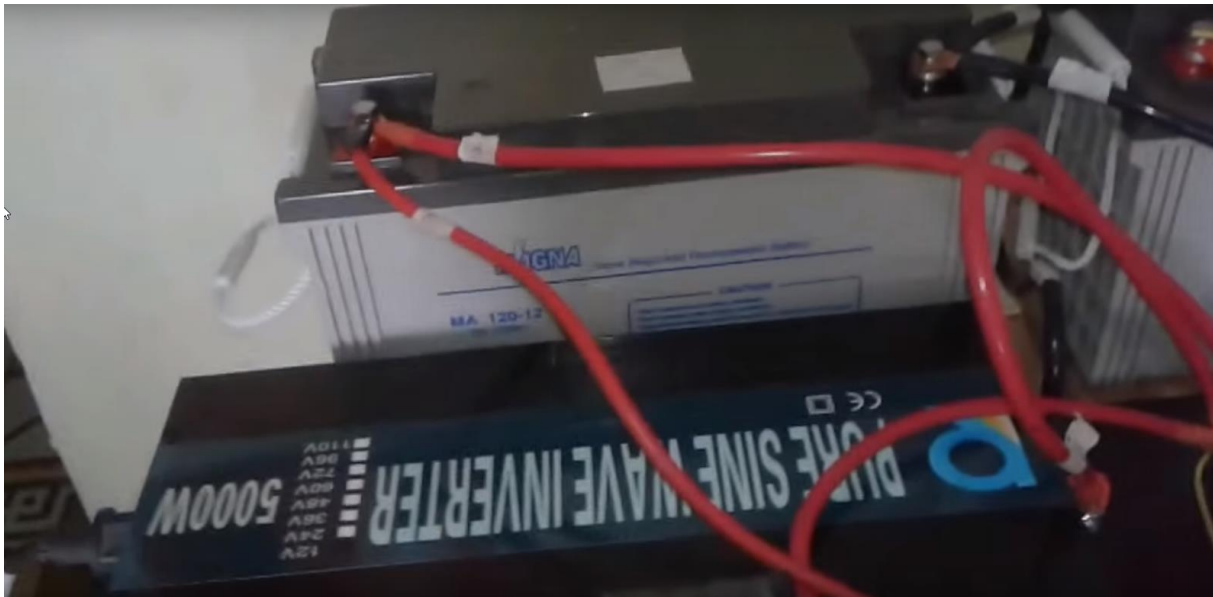


Components of the Ucrós Multiplier System :

<https://www.youtube.com/watch?v=OUiKMm9IHCE>



1. Background. Two batteries 12 V 120 Ah
2. Middle left : Pure Sine Wave Inverter
3. Front left: Transformer
4. Front right: Schumacher Battery Charger 50 A, 12 V (modified with pulse electronic)
5. Front middle : 4 disconnect relay with white timer box for generating switching pulses



Pure Sine Wave Inverter 12 V, 24 V, 110 V 5'000 W

https://www.aliexpress.com/store/product/LED-Display-5000W-pure-sine-wave-inverter-12v-24v-48v-to100v-110v-120v-220v-230v-240v/413804_32478890376.html

Here is a description of the 10'000 Watt version:

10000W Peak 5000W Solar Inverter Pure Sine Wave Inverter 24V 220V Power Inverter 12V/48V/96V/110V DC to 100V/110V/120V/240V AC

★★★★★ 5.0 (5 votes) | 6 orders

Price: ~~US \$500.00 - 565.00~~ / piece

Discount Price: **US \$390.00 - 440.70** / piece **-22%** **6 days left**

 [Get our app to see exclusive prices](#) | Bulk Price

Ships From:

Input Voltage:

Output Voltage:

Socket Type:

Shipping: Please select the country you want to ship from

Quantity: piece (32399 pieces available)

Total Price: Depends on the product properties you select

Weight: 10,2 kg



Rear View with connections for + and -



Schumacher Battery Charger

<https://www.amazon.com/Schumacher-SE-1052-Manual-Starter-Charger/dp/B000AM8BF4>

Schumacher



Schumacher SE-1052 50/10/2 Amp Manual Starter/Charger

Price: \$51.21

In Stock

Priority Shipping at checkout. [Learn more](#) Ships from and sold by Amazon.com.

- 50 amp engine start for emergency starting
- 10 amp fast charge for everyday charging needs. 2 amp trickle charge charges a small 12 volt battery in 2 - 12 hours
- 3 function power switch to choose mode of charge
- This product cannot be shipped to Oregon or California.
- Manual operation - must be monitored
- Not compatible with the WM-12 or EC-25 quick connect cables

Weight : 10,1 pound = 4,58 kg

This charger is modified and produces current with superimposed rectangular pulses and a repetition frequency of some 900 Hz. This technology allows according to Tesla a very fast charging about 9 times quicker compared with the discharging time of the other battery which is connected to the load (via DC/AC-inverter). All 5 minutes the batteries are exchanged by the disconnect relay which are controlled by a timer unit (see below).

Carcador Schumacher with higher amperage for the 2 battery arrangements

Schumacher SE-152/55/20/2 Amp' 12V Manual Starter Charger

<https://www.amazon.com/Schumacher-SE-1520-Manual-Starter-Charger/dp/B009PHKMX4>



20 ampere fast charge for charging a large battery in 3 to 5 hours

Price : 124,05 USD

Can be shipped to Switzerland in 4 days.

Only 2 left in stock (more on the way) January 20, 2018

20 A fast charge, 55 A boost charge

Weight: 27,2 pounds = 12,34 kg

Circuit diagramm of the Ucros cycle electric system

www.borderlands.de/Links/UCES-Dia1.jpg

Carcador with much higher amperage for the 4 battery arrangement

Deca CLASS BOOSTER 5000 battery charger

<http://www.amacoo.com/deca-class-booster-5000-battery-charger-with-rapid-starter-for-charging-lead-accumulators-and-quick-boosting>



Input Voltage (Volt 50-60Hz AC):	1 Phx230
Power (KW):	2,3 / 11
Charging voltage (Volt):	12 / 24
Average charging current (Amp):	70
Effective charging current (Amp):	105
Charging positions (N°):	4
Boosting Current (Amp 0 Volt cc):	2500
Boosting current (Amp 1 Volt):	1200
Nom.capacity to refer to (Ah 15h min/max):	35 / 800
Dimensions (mm.):	450 x 320 x 700
Peso (Kg):	28

Price € 294,40

Circuit diagramm of the Ucros cycle electric system

www.borderlands.de/Links/UCES-Dia2.jpg

<http://www.ferrovicmar.com/herramientas-electricas.asp?producto=arrancador-solter-autonomy9500>



Arrancador de baterías **Autonomy 9500 Pro Solter**

- Tensión de arranque: 12V/24V
- Capacidad batería: 56Ah (12V)/28Ah (24V)
- Arranque(max.): 12V / 2000A - 24V / 1000A
- Arranque(pico): 12V / 4000A - 24V / 2000A
- Dimensiones: 540x390x840mm
- Peso: 35Kg

El arrancador **Autonomy 9500Pro** de Solter es un arrancador portátil, eficaz y muy potente. Dispone de asa abatible y ruedas para facilitar su transporte. Con este arrancador podremos verificar el estado de la batería interna gracias a su botón Test, que nos mostrará el voltaje de la batería en el voltímetro. Solter recomienda su uso para motocicletas, vehículos, furgonetas, tractores y camiones.

Precio : **712,80 €** (Neto)

Circuit diagram of the Ucros cycle electric system

www.borderlands.de/Links/UCES-Dia3.jpg

MAGNA Power Batteries MA 120 Ah, 12 V

https://www.google.ch/search?newwindow=1&safe=strict&biw=1600&bih=794&tbm=isch&q=Magna+Batteries+12V&spell=1&sa=X&ved=0ahUKEwid4_XmhdHYAhUD7RQKHcBYBoMQBQg7KAA#imgrc=ByJBnhhZHJJdM:



Special Electronic



The right bright element is the timer which gives the signals to the disconnect relay and switch from one battery to the other (all 5 minutes). That means each battery is 5 minutes long connected to the inverter while the other is connected to the charger. And after 5 minutes the battery connections are exchanged.

The 4 rectangular dark boxes are Battery Disconnect Relay, type WM 686 RL/280-12 12 V/200 A

<https://www.google.ch/search?newwindow=1&safe=strict&tbm=isch&q=WM686+RL/280-12+12+V/200+A&spell=1&sa=X&ved=0ahUKewjOjZLviNHYAhhVErRQKHfT2BO8QBQg7KAA&biw=914&bih=454&dpr=1.75>



<https://roundupreviews.de/de/pkw-camping>

ebay

Kaufen: €7,79*

Buying for €7,79

Nominal switchable current is 200 A, peak current is 240 A.

Electronic Power Relay (recommended by Peter Furrer for frequently switching applications)

https://www.mouser.de/ds/2/645/D_EPR10_ENG-1128473.pdf

The electronic power relay EPR10 is a solid state relay for high continuous currents. It is suitable for use in utility vehicles and special vehicles where reliability and functional safety are at a premium. At DC 24 V, the EPR10 allows a continuous load of up to 200 A.

80 % less space requirement than similar conventional solid state relays: - no heat sink required - low internal resistance through parallel connection of power semi-conductors - technically mature heat management - cooling through connecting cables |

Low investment costs: - blade fuses in sub-paths and heat sinks superfluous because the EPR protects against overcurrent and short circuit |

Minimised maintenance costs: - enhanced availability due to a much longer life span compared to mechanical relays - very high resistance against dust, humidity, vibration and shock due to the sealed electronic circuitry

Price : 333,44 €

https://www.mouser.de/search/refine.aspx?Ntk=P_MarCom&Ntt=129250277



The universal timer is listed here:

<http://www.electricasbogota.com/detalles/temporizadores/1511-at11en>



Detail description, see :

http://www.electricasbogota.com/pdf/at11dn_en.pdf

AT11DN-24-240
MULTI FUNCTION TIMER, 0.05SEC-100HR, 100VAC-240VAC
AUTONICS
Minimum Order: 1
\$41.95 Each

AT11EN

Rango: 0.05 Seg Hasta 100hr
Funciones: Start - Reset - Inhibit
Modos de Salida : 6
Alimentación: 100-240VAC 50/60Hz / 24-240VDC
Salida de control: 1 Relé, SPDT + 1 inst. SPDT
Número de Pines : 11 (base no incluida)
Dimensiones: H48 x W48mm

AT11EN-1

Rango: 0.05 Seg Hasta 100hr
Funciones: Start - Reset - Inhibit
Modos de Salida : 6
Alimentación: 12VDC
Salida de control 1 Relé, SPDT + 1 inst. SPDT
Número de Pines : 11 (base no incluida)
Dimensiones: H48 x W48mm

The version on the right connects directly to the 12 V of a car battery.



Condition: **New**

Quantity: 2 available / 1 sold in 1 hour

Price: **US \$35.90**
Approximately C \$45.23

Buy It Now

Add to cart

[Add to watch list](#)

[Add to collection](#)

More than 49% sold

Longtime member

<https://www.ebay.ca/itm/Autonics-AT11EN-Signal-on-start-Type-Multi-function-Timer-100-240VAC-24-240VDC/322568061102? trkparms=aid%3D222007%26algo%3DSIM.MBE%26ao%3D2%26asc%3D20180124153937%26meid%3D6ea8f0aed76d4494aa121997efa65637%26pid%3D100623%26rk%3D5%26rkt%3D6%26sd%3D261502465303%26itm%3D322568061102& trksid=p2047675.c100623.m-1>